



**CIVIL & MINING**

**CRUSHING & SCREENING**

**BULK HAULAGE & SITE SERVICES**

**CONSTRUCTION MATERIAL**

# CIVIL & MINING

**CAPABILITY STATEMENT 2024**

# LEADING THE WAY IN CIVIL AND MINING SOLUTIONS

MLG excels in bulk earthworks, road construction, tailings facility development, open-pit mining, and a wide range of other civil and mining projects.







## CONTENTS

ABOUT MLG	04
OUR SERVICES	06
COMPANY TIMELINE	07
OUR BUSINESS PARTNERS	08
CIVIL AND MINING	09
BARREN LANDS OPEN PIT MINE	11
GRUYERE TSF STAGE 4 RAISE	13
MT SHENTON ROAD UPGRADE	15
MEET THE CIVIL & MINING TEAM	17
MLG ORGANISATIONAL STRUCTURE	18
OUR FLEET	20

# ABOUT

MLG is a leading provider of innovative mine site and supply chain solutions, committed to offering comprehensive services throughout the entire project lifecycle.

Founded in 2002 in Kalgoorlie, Western Australia, by Managing Director Murray Leahy, MLG has evolved from its humble beginnings, initially offering silica haulage services to BHP, to become a publicly listed company on the Australian Stock Exchange.

With a workforce exceeding 1300 personnel and operations spanning 32 sites in Western Australia and the Northern Territory, MLG supports some of Australia's most prominent resource companies.

MLG's expertise extends across the gold, iron ore, nickel, and base metals sectors. Its extensive fleet of approximately 1,470 heavy vehicles and support equipment underpins its ability to deliver an integrated service offering tailored to meet the unique needs of the mining and civil infrastructure industries.

MLG's unwavering commitment to exceeding its client expectations has earned us a reputation as a reliable and trusted partner. Our dedication to excellence and continuous improvement has been the cornerstone of our success, allowing us to serve our loyal client base for over 22 years. At MLG, we pride ourselves on our ability to provide innovative solutions that drive efficiency and add value to our clients' operations.

## COMPREHENSIVE MINE SITE SERVICES

MLG's vertically integrated approach delivers unparalleled efficiency and reliability across all your mining needs.

1. Civil and Mining
2. Crushing and Screening Services
3. Bulk Haulage and Mine Site Services
4. Construction Material

**MLG'S CLIENT BASE  
INCLUDES SOME OF THE  
LARGEST RESOURCES  
COMPANIES OPERATING  
IN AUSTRALIA.**



## OUR SERVICES

### CIVIL & MINING

MLG's civil and mining division specialises in delivering a comprehensive range of services, including haul road construction, TSF construction and lifts, and open pit mining services. Leveraging a multi-disciplinary approach, MLG's civil and mining division is underpinned by a dedicated team of project managers, supervisors, and experienced plant operators, all focused on delivering cost-effective and operationally efficient solutions.

### CRUSHING & SCREENING

MLG's crushing and screening division is centred around run-of-mine ore crushing, concrete aggregate, road base production, and general screening services. MLG has an extensive fleet of mobile and modular crushing and screening equipment capable of providing a range of crushing and screening services to multiple commodities, including gold, iron ore, nickel, lithium, copper, lead and zinc.



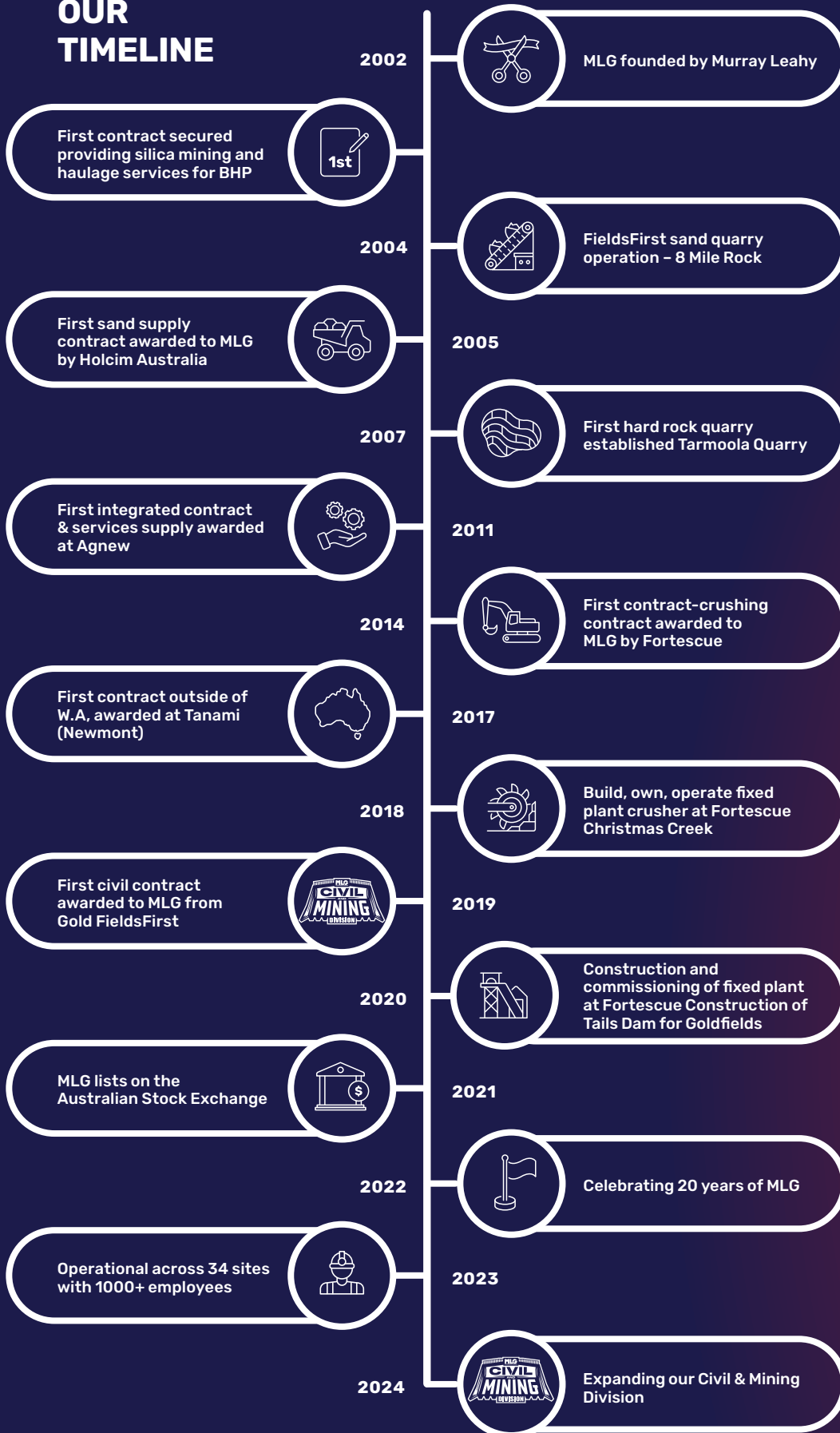
### **BULK HAULAGE & SITE SERVICES**

MLG's bulk haulage and site services division specialises in offering a complete end-to-end haulage solution. This includes general mine site and bulk haulage, maintenance and management of mine site infrastructure, including roads, dust suppression and environmental management, stockpile management, and crusher feed requirements.

### **CONSTRUCTION MATERIAL**

MLG owns and operates strategically located quarries near key mining hubs, which enables it to source, produce, and supply construction materials to the mining and civil construction sectors. MLG's operational quarries focus on the mining of silica sand, screened sand, gravel, and aggregates for use in construction and mining processes.

## OUR TIMELINE





# OUR BUSINESS PARTNERS

MLG is proud to support and service some of the largest mining companies operating through out Australia, having built long-lasting relationships spanning MLG's 22 year history.





## CIVIL & MINING

### MLG'S CIVIL & MINING SOLUTION

Leveraging a multi-disciplinary approach, MLG's Civil and Mining division delivers comprehensive services to the mining and energy sector across Western Australia and the Northern Territory. We focus on operational excellence, including bulk earthworks, detailed civil construction, and contract mining. Supported by a dedicated team of project managers, supervisors, and experienced plant operators, we are committed to providing cost-effective and operationally efficient solutions tailored to the specific needs and challenges of each project, ensuring seamless execution and high standards of safety.



## **OUR SERVICES INCLUDE**

MLG's Civil and Mining division has extensive experience in delivering the following services:

1. Tailings Storage Facilities: Construction (including lifts) of tailings storage facilities including lining.
2. Open Pit Mining: Full scope of activities including clear & grub, drill & blast, and load & haul.
3. Bulk Earthworks: Comprehensive services.
4. Civil Works: General civil works including concrete projects.
5. Haul Road Construction: Building and maintaining roads for haulage.
6. Drainage: Developing drainage culverts, floodways, and bunds.
7. Road Maintenance: Grading, watering, and installing signage.
8. Site Rehabilitation: Mechanical seeding and land restoration.
9. Clearing and Topsoil Stripping: Preparing sites for mining operations.
10. Construction of Water Dams: Building pipeline bund walls and scour pits.

**MLG'S CIVIL & MINING DIVISION  
SPECIALISES IN DELIVERING A BROAD  
RANGE OF SERVICES TO MEET SPECIFIC  
NEEDS OF OUR CLIENTS.**



## BARREN LANDS OPEN PIT MINE

**MLG'S BARREN LANDS OPEN PIT MINE PROJECT, WHICH WAS DELIVERED TO AGNEW GOLD MINING COMPANY, INCLUDED OPEN PIT MINING, EXTENSIVE EARTHWORKS, DRILL AND BLAST, LOAD AND HAUL OPERATIONS, AND COMPREHENSIVE SITE REHABILITATION WORKS.**

The Barren Lands Project underscores MLG's capabilities in delivering comprehensive mining and civil solutions. From initial earthworks and mining operations to environmental management and infrastructure development, our integrated approach guarantees seamless project execution. This project highlights our unwavering commitment to excellence and client satisfaction, cementing our reputation as a trusted mining and civil construction partner.



Client	<b>GOLD FIELDS AUSTRALIA</b>
Mine	<b>AGNEW GOLD MINE</b>
Location	<b>LEINSTER, WA</b>
Duration	<b>8 MONTHS</b>
Value	<b>\$15+ MILION</b>
Commodity	<b>GOLD</b>
Material Moved	<b>2,500,000 M<sup>3</sup> TONNES</b>

Assets:

- **1 X 9150 EXCAVATOR**
- **4 X 777 DUMP TRUCKS**
- **1 X D9T DOZER**
- **1 X GRADER**
- **1 X WATERCART**

Located 630 km northeast of Perth at the Agnew Gold Mine, the Barren Lands Project was a significant undertaking focusing on developing a single open pit. MLG's role extended beyond mining operations at the Barren Lands mine site, encompassing comprehensive site development and infrastructure setup. The scope of work included managing and executing drill and blast activities on site, supplying quarry management for the project, constructing turkey nests and culverts installation, and handling all topsoil removal across the project.

With a robust and modern fleet mobilised for the project, including a Liebherr 9150 excavator, four Caterpillar 777 Dump Trucks, a Caterpillar D9T Dozer, a grader, and a water cart, MLG ensured efficient and timely project delivery. The well-coordinated machinery and skilled operators enabled seamless execution and adherence to project timelines.

Across the project, MLG excavated and hauled more than 2.5 million cubic metres of ore over the 8-month project term, including the pre-mining earthworks, open pit mining activities, and rehabilitation and closure works.

"THE BARREN LANDS OPEN-PIT MINING PROJECT DEMONSTRATES OUR CLIENT'S CONFIDENCE IN MLG'S ABILITY TO LEVERAGE OUR INTEGRATED SERVICE OFFERING TO DRIVE VALUE FOR OUR CLIENT BASE."

MURRAY LEAHY, MANAGING DIRECTOR, MLG.



## GRUYERE TSF STAGE 4 RAISE

**MLG SUCCESSFULLY DELIVERED THE GRUYERE TSF STAGE 4 RAISE PROJECT ON TIME AND WITH ZERO SAFETY INCIDENTS, REINFORCING OUR COMMITMENT TO EXCELLENCE AND RELIABILITY ACROSS THE CIVIL AND MINING SECTORS.**

The Gruyere TSF Stage 4 project involved extending the existing tailings storage facility at the Gruyere Gold Mine, a joint venture between Gold Fields and Gold Road Resources. Delivering the project over an eight-month period, MLG met all operational milestones and delivered the project on time and on budget, demonstrating MLG's expertise and commitment to delivering high-quality, reliable solutions in the mining sector.



Client	<b>GRUYERE JV - GOLD ROAD RESOURCES &amp; GOLD FIELDS AUSTRALIA</b>
Mine	<b>GRUYERE GOLD MINE</b>
Location	<b>COSMO NEWBERRY, WA</b>
Duration	<b>9 MONTHS</b>
Value	<b>\$17+ MILION</b>
Commodity	<b>GOLD</b>
Material Moved	<b>1,200,000 M<sup>3</sup> TONNES</b>

Assets:

- **1 X 150T EXCAVATOR**
- **3 X DOZERS**
- **2 X 30T FINAL TRIM EXCAVATORS**
- **1 X 150M GRADER**
- **2 X 40T WATERCARTS**
- **2 X 16T ROLLERS**
- **5 X 60T DUMP TRUCKS**
- **1 X 990 LOADER**
- **1 X 930 LOADER**

Located approximately 200 km northeast of Laverton in the Eastern Goldfields, MLG successfully moved over 1.2 million cubic meters of material, showcasing our expertise in handling substantial earthworks. MLG also managed all Quality Assurance and Quality Control (QA-QC) processes throughout the project, ensuring the highest standards were maintained.

The project included a 5-meter raise to the existing embankment, along with the elevation of the decant accessway, decant tower, access ramp, and associated piping, mechanical, and electrical services. This comprehensive effort highlights MLG's capability to execute complex civil engineering tasks efficiently and to the highest quality standards.

**"SUCCESSFULLY DELIVERING THE GRUYERE TSF STAGE 4 RAISE ON TIME AND WITHIN BUDGET UNDERSCORES OUR TEAM'S EXPERTISE AND DEDICATION. THIS PROJECT ENHANCES OUR OPERATIONAL CAPACITY AND SUPPORTS THE CONTINUED SUCCESS OF THE GRUYERE SITE."**

**GAVIN NOY, REGIONAL MANAGER CIVIL - MLG.**



## MT SHENTON ROAD UPGRADE

**THE MOUNT SHENTON ROAD UPGRADE PROJECT WAS A CRITICAL INFRASTRUCTURE ENHANCEMENT PROJECT DELIVERED BY MLG FOR THE GRUYERE GOLD MINE.**

MLG undertook the Mt Shenton Road Upgrade project in 2024, located approximately 200 km northeast of Laverton in the Eastern Goldfields. Over three-and-a-half months, MLG upgraded an 18 km stretch of Mt Shenton Road. The critical nature of the project saw MLG enhance the existing road infrastructure to support the improvement in the operational efficiency of the Gruyere Gold Mine.

This project is a testament to MLG's commitment to delivering high-quality infrastructure projects that enhance operational efficiency and support the mining industry's growth and sustainability.





Client	<b>GOLD FIELDS AUSTRALIA</b>
Mine	<b>GRUYERE GOLD MINE</b>
Location	<b>COSMO NEWBERRY,WA</b>
Duration	<b>3.5 MONTHS</b>
Value	<b>\$3.5+ MILION</b>
Commodity	<b>GOLD</b>
Material Moved	<b>86,400 M<sup>3</sup> TONNES</b>

Assets:

- **4 X ROAD TRAINS**
- **1 X DOZER**
- **2 X FINAL TRIM GRADERS**
- **1 X TRIPLE WATERCART**
- **2 X 16T ROLLERS**
- **1 X 980 LOADER**

The Mout Shenton Road's remote location and existing condition posed challenges that the project aimed to address by upgrading it to facilitate smoother and safer transportation of personnel, equipment, and mined resources.

MLG's project delivery included site establishment, site and environmental management, borrow pite management, including topsoil clearing and grubbing, survey and set-out of all lines and levels, all road upgrade works and associated material haulage, and preparation of comprehensive As-Built documentation and test certificates.

MLG mobilised 11 major assets to deliver the project and handled over 86,400 tonnes of gravel and associated materials. The project, completed in 3.5 months, was delivered on time and on budget, with all key operational milestones met. Very importantly, Project TRIFR was maintained at 0.00 throughout the duration, ensuring the highest safety and efficiency standards.

**"OUR TEAM'S DEDICATION ENSURED THE SUCCESSFUL COMPLETION OF THE PROJECT ON TIME AND WITHIN BUDGET, WITH A TRIFT OF 0.00, SIGNIFICANTLY ENHANCING THE INFRASTRUCTURE FOR THE GRUYERE GOLD MINE."**

SEAN MERRITT, PROJECT MANAGER - MLG.



## CIVIL AND MINING TEAM

Our Civil and Mining team brings together a wealth of expertise and experience, ensuring that every project is executed precisely and professionally. Our management team excels in operational delivery, strategic planning, resource allocation, and operational efficiency, driving the success of projects across the civil and open pit mining sectors.

**GAVIN NOY**  
Civil & Mining Manager

**SEAN MERRIT**  
Project Manager

**LACHLAN GREEN**  
Project Manager

**MATT WILSON**  
Project Manager

# ORGANISATIONAL STRUCTURE

MLG's management team is led by Managing Director, Murray Leahy, who founded the business in 2002. The business is supported by an experienced board and executive leadership team with complementary and diverse experience in haulage, crushing and mining services, finance, supply chain management, maintenance, and health and safety.

## BOARD OF DIRECTORS



**MURRAY LEAHY**  
Managing  
Director



**GARRET DIXON**  
Non-Executive  
Director



**ANNA NEULING**  
Non-Executive  
Director

## EXECUTIVE LEADERSHIP TEAM



**MARK HATFIELD**  
Chief Operations  
Officer



**PHIL MIRAMS**  
Chief Financial  
Officer



**TOM GREGORCZYK**  
Chief Commercial  
Officer



**ALLUN WALLER**  
Chief People  
Officer



# POWERING MLG'S OPERATIONS

MLG's extensive fleet of heavy vehicles and support equipment is the backbone of our robust operational capabilities. With more than 1,400 modern and meticulously maintained units, we partner with industry-leading OEMs, including Caterpillar, MACK, Kenworth, Mick Murray Welding, Bruce Rock Engineering, and Terex Finlay. We ensure our fleet is at the forefront of technology and reliability, ensuring unparalleled efficiency and reliability across our service offerings.

# OUR FLEET

Our fleet includes:

- **190+ PRIME MOVERS**
- **650+ TRAILER EQUIPMENT**
- **140+ LOADERS**
- **55+ EXCAVATORS**
- **215+ LV'S**
- **30+ GRADERS**
- **40+ MOBILE STACKERS**
- **20+ MOBILE CRUSHERS**
- **20+ MOBILE SCREENS**
- **60+ SERVICE VEHICLES**
- **30+ FORKLIFTS**
- **10+ SKIDSTEERS**
- **10 + BULLDOZERS**

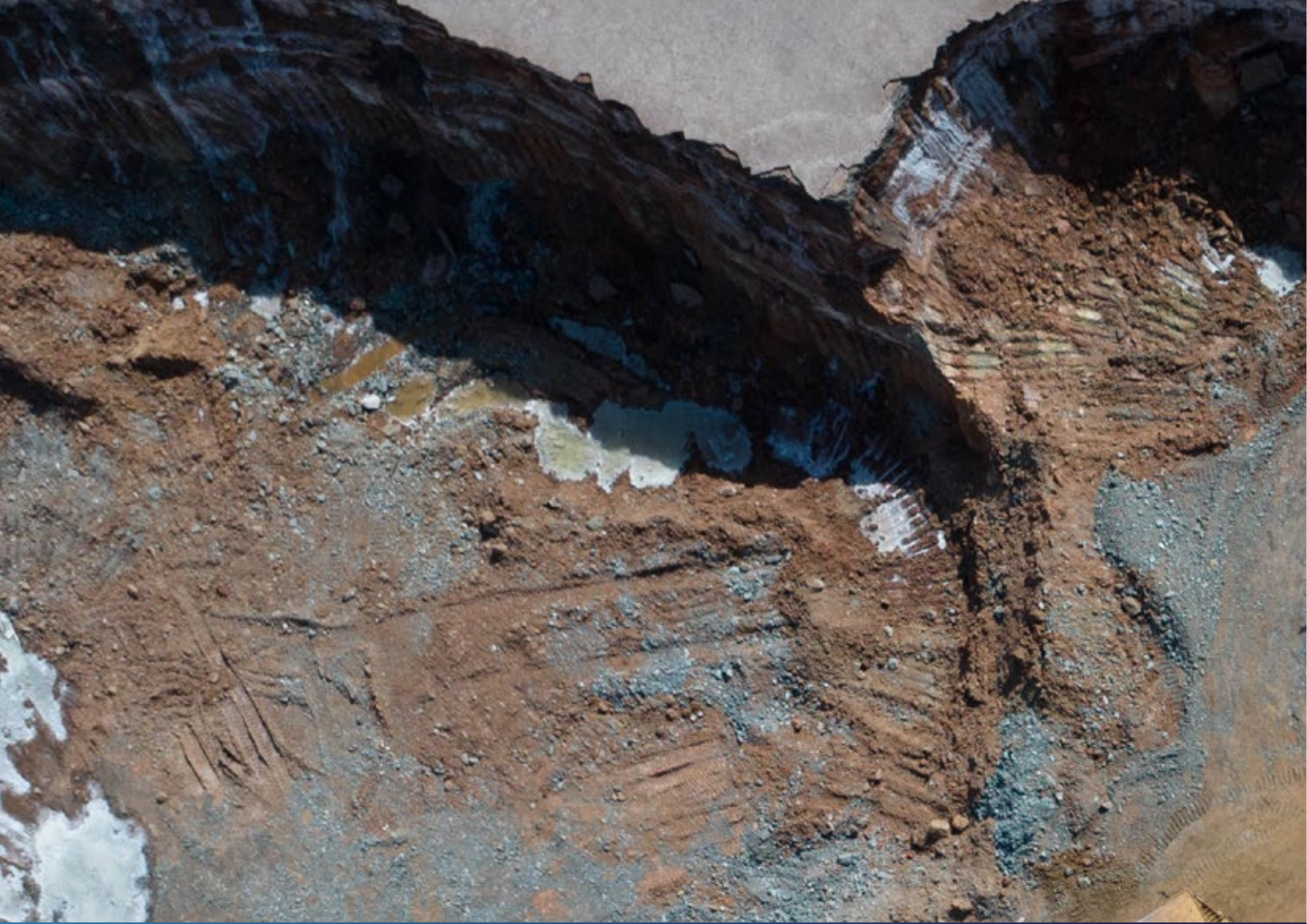
Each piece of equipment is selected and maintained to meet the highest performance and safety standards, ensuring we consistently exceed our client's expectations. The scale and sophistication of our fleet enable us to undertake projects of any size and complexity, providing the agility and capacity required to support the dynamic demands of our industry. Whether transporting materials across vast distances, executing intricate construction projects, or ensuring seamless on-site operations, MLG's fleet is ready to deliver exceptional results every time.



**“ AT MLG, OUR CIVIL AND MINING DIVISION IS DEDICATED TO DELIVERING OPERATIONAL EXCELLENCE AND UNPARALLELED SERVICE . OUR COMMITMENT TO INNOVATION, SAFETY, AND SUSTAINABILITY ENSURES WE MEET THE UNIQUE CHALLENGES OF EACH PROJECT. ”**

**MARK HATFIELD, CHIEF OPERATING OFFICER**





#### **HEAD OFFICE**

**A** 10 Yindi Way Kalgoorlie,  
Western Australia

**P** (08) 9021 1011

#### **PERTH OFFICE**

**A** Level 5, 200 St Georges Terrace Perth,  
Western Australia

**P** (08) 9022 7746

#### **EMAIL**

[info@mlgoz.com.au](mailto:info@mlgoz.com.au)

#### **WEBSITE**

[mlgoz.com.au](http://mlgoz.com.au)

#### **ABN & ASX**

**ABN** 53 102 642 366

**ASX** MLG

